

# BUILDING 4200 - SUITE 200

±13,275 RSF



**MENLO**  
CORPORATE  
CENTER



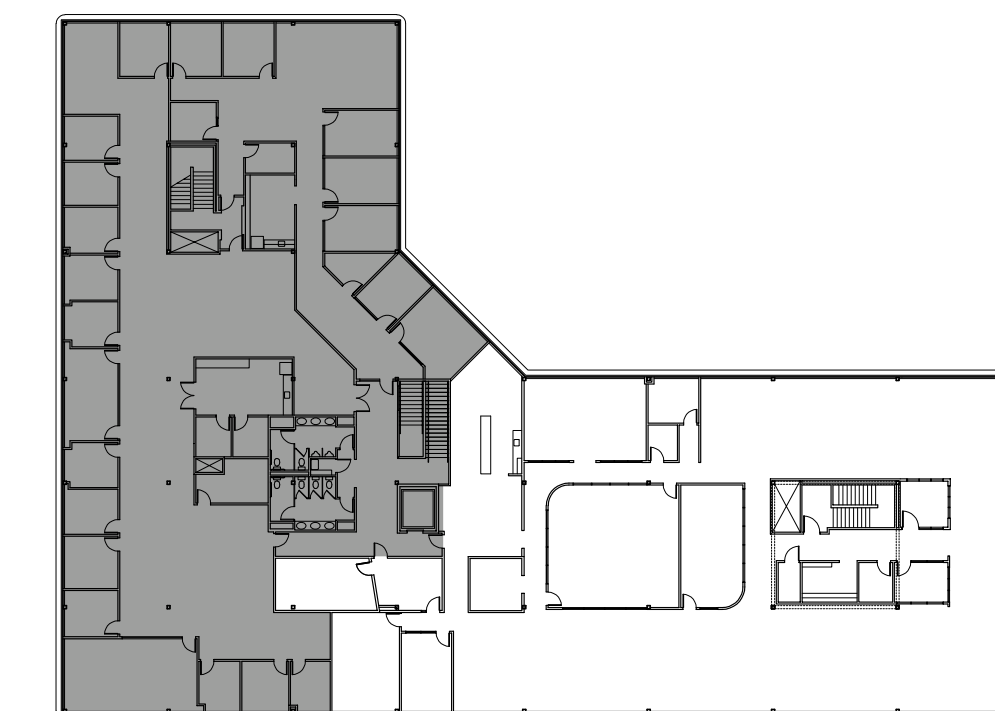
## SUITE HIGHLIGHTS:

- Large Open Office
- 122 Workstations
- 2 Conference Rooms
- Break Area
- 4 Collaboration Areas
- 3 Phone Rooms

SITE PLAN:



KEY PLAN:



**BEN PAUL** | Vice Chairman | +1 650 401 2123 | ben.paul@cushwake.com | LIC #0121087

**BRAD ALTICK** | Managing Director | +1 650 814 5169 | brad.altick@cushwake.com | LIC #01877935

**DAVID HIEBERT** | Vice Chairman | +1 650 320 0250 | david.hiebert@cushwake.com | LIC #01189320

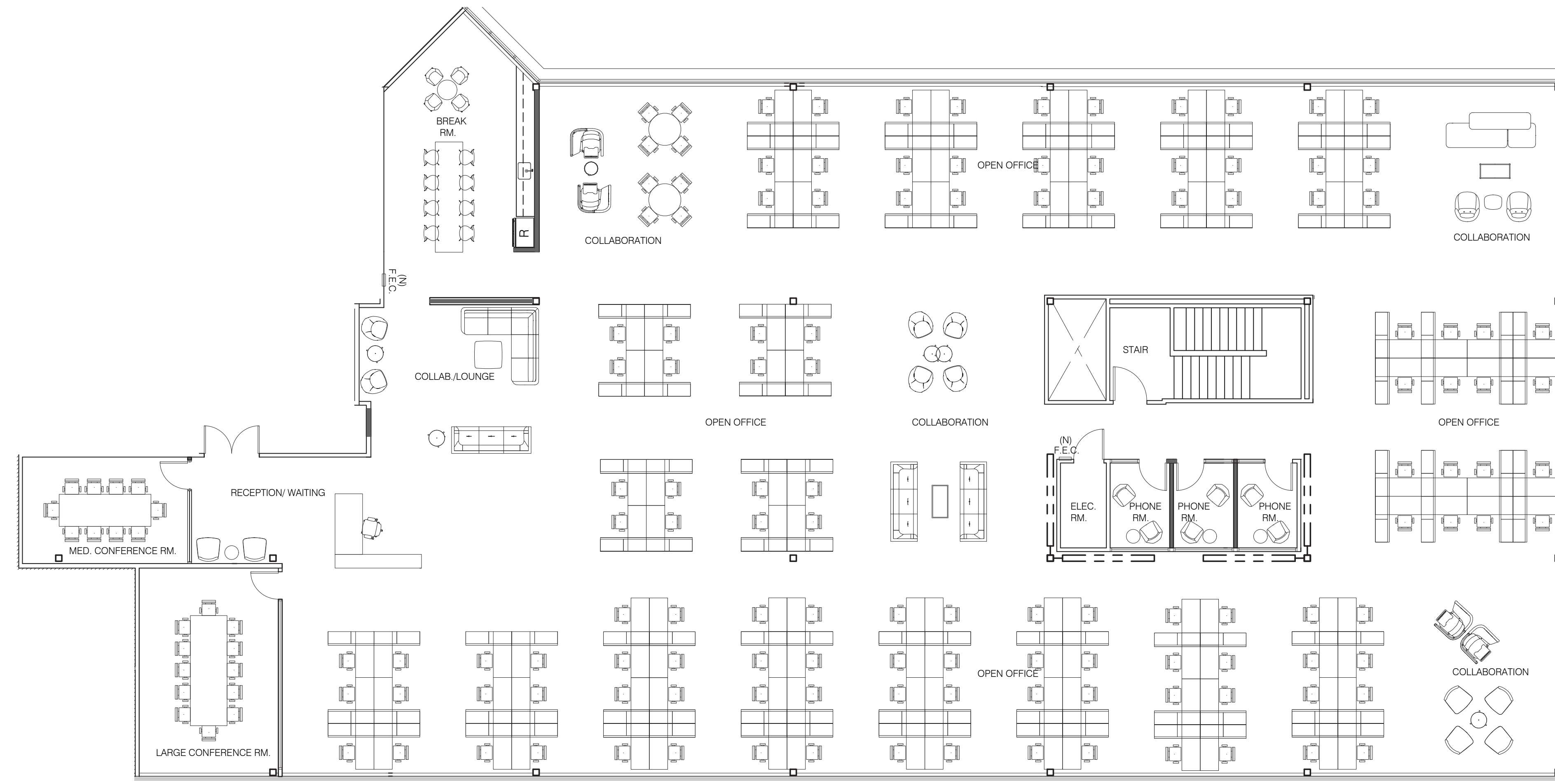


# BUILDING 4200 - SUITE 200

±13,275 RSF



**MENLO**  
CORPORATE  
CENTER



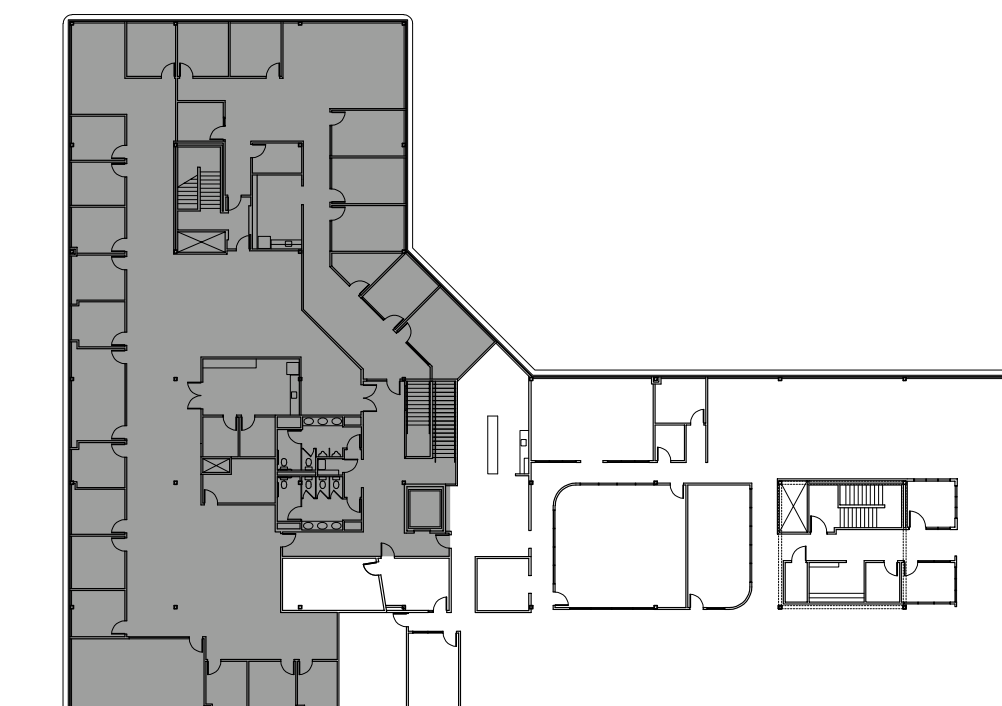
## SUITE HIGHLIGHTS:

- Large Open Office
- 122 Workstations
- 2 Conference Rooms
- Break Area
- 4 Collaboration Areas
- 3 Phone Rooms

SITE PLAN:



KEY PLAN:



**BEN PAUL** | Vice Chairman | +1 650 401 2123 | ben.paul@cushwake.com | LIC #0121087

**BRAD ALTICK** | Managing Director | +1 650 814 5169 | brad.altick@cushwake.com | LIC #01877935

**DAVID HIEBERT** | Vice Chairman | +1 650 320 0250 | david.hiebert@cushwake.com | LIC #01189320

